

brother

PARTS BOOK

LT2-B882

P882002





Twin Needle Needle Feed Lock Stitch Machine (Large Hook)


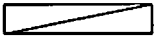
BROTHER INDUSTRIES, LTD.
NAGOYA, JAPAN

From the library of: Superior Sewing Machine & Supply LLC


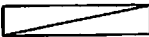
Notes for using this parts book

1. This book is applicable to sewing machines which have the same plate number as shown on the cover of this book (or correction sheet).
2. If the symbol  is found in the "Parts No." column or the "Assembly No." column, refer to the different parts list on page 8.
3. The symbol  in the "Parts No." column indicates that the parts is not available for supply. If, however, there is a number in the "Assembly No." column, the parts can be ordered as an assembly. Please, therefore, order by using the Assembly No.
4. This book was prepared based on information available in September, 1981.
5. Parts are subject to changes in design without prior notice.


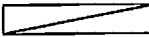
Anmerkungen zum Gebrauch dieses Stücklistebuches

1. Dieses Buch bezieht sich auf die Nähmaschinen mit derselben Kennungsnummer wie auf diesem Buchumschlag (oder auf dem Korrekturblatt).
2. Dieses Zeichen  in der Spalte "Parts No. (Teilnummer)" oder "Assembly No. (Gerätesatznummer)" verweist auf die Gesonderte Stückliste auf Seite 8.
3. Dieses Zeichen  in der Spalte "Teilnummer" bedeutet, daß dieser Teil nicht lieferbar ist. Wenn jedoch in der Spalte "Gerätesatznummer" eine Nummer steht, kann dieser Teil als ein Geräteteilsatz bestellt werden. Bestellen Sie daher bitte mit dieser Gerätesatznummer.
4. Dieses Buch basiert auf den Informationen vom September, 1981.
5. Modelländerungen sind vorbehalten.

Notes sur l'utilisation de ce manuel de pièces détachées

1. Ce manuel est destiné aux machines à coudre ayant le même numéro de plaque montré sur la couverture de ce manuel (ou sur la feuille de corrections).
2. Si le symbole  se trouve dans la colonne "Parts No. (N° de pièce)" ou dans la colonne "Assembly No. (N° jeu de pces)", veuillez vous référer à la liste de pièces annexe page 8.
3. Le symbole  dans la colonne "N° de pièce" signifie que la pièce ne peut être fournie. Si, dans la colonne "N° jeu de pces", il y a un numéro de nomenclature, la pièce peut être commandée comme faisant partie d'un jeu de pièces. Donc, pour toute commande, veuillez spécifier le N° de jeu de pièces.
4. Ce manuel a été fait d'après les renseignements valables au mois de Septembre 1981.
5. Les pièces peuvent être sujettes à des modifications sans préavis.

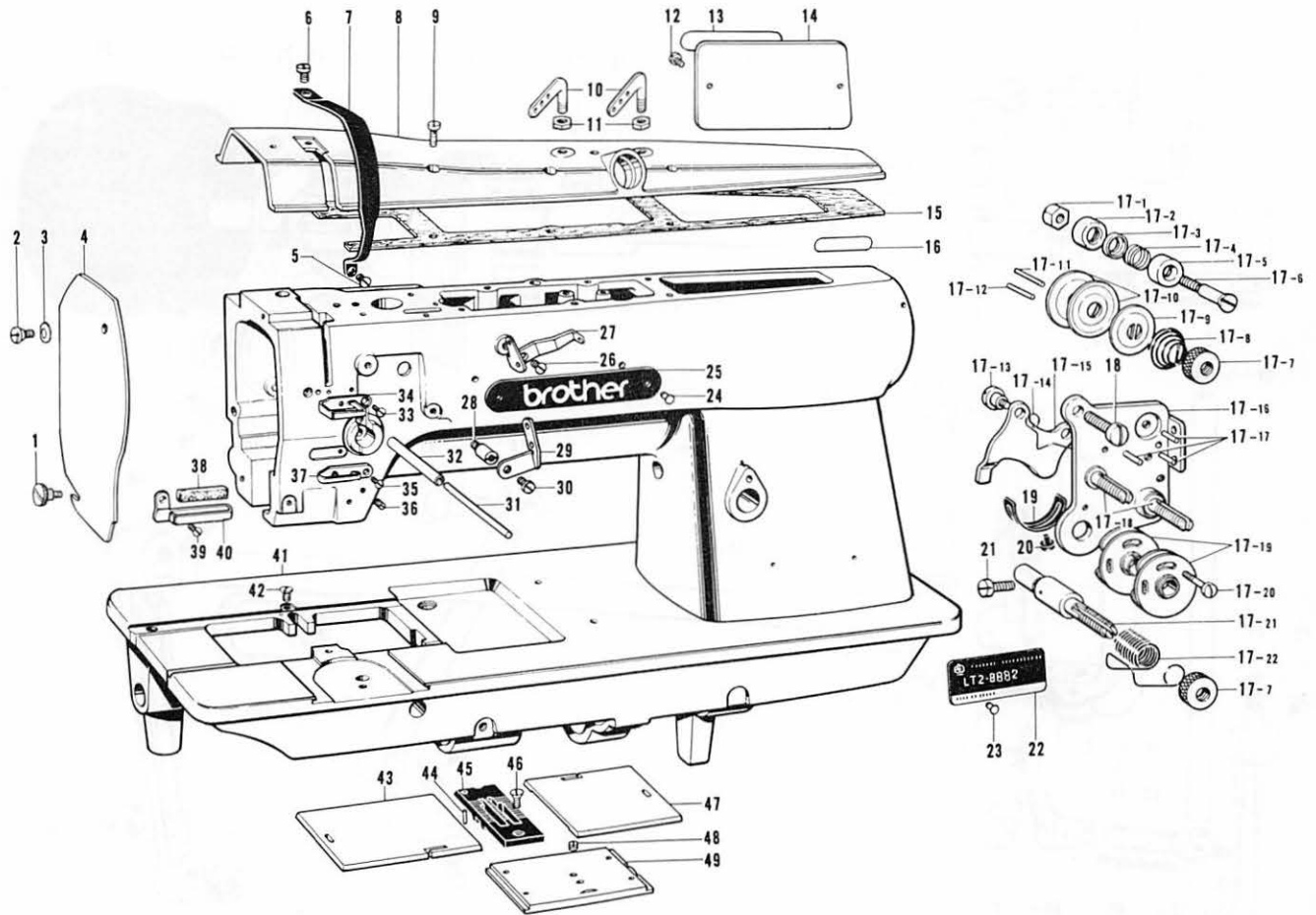
Notas para usar este Libro de Piezas

1. Este libro sirve para todas las máquinas de coser que llevan la misma placa de identificación que la que se puede ver en la tapa de este libro (o en la hoja de erratas).
2. De haber un símbolo  junto al "Parts No. (Número de Pieza)" o en la columna del "Assembly No. (Número de Juego)", habrá que mirar la lista de piezas separada de la página 8.
3. El símbolo , que se encuentra en la columna del "Número de Pieza", quiere decir que no se dispone de dicha pieza sola. Cuando, empero, hay un número en la columna del "Numero de Juego", se podrá ordenar la pieza con todo el juego. Por lo tanto, será mejor hacer el pedido recurriendo al número del juego respectivo.
4. Este libro ha sido compilado basándose en los datos de que se disponía en septiembre de 1981.
5. Las piezas quedan sujetas a cambios de diseño sin aviso previo.

CONTENTS

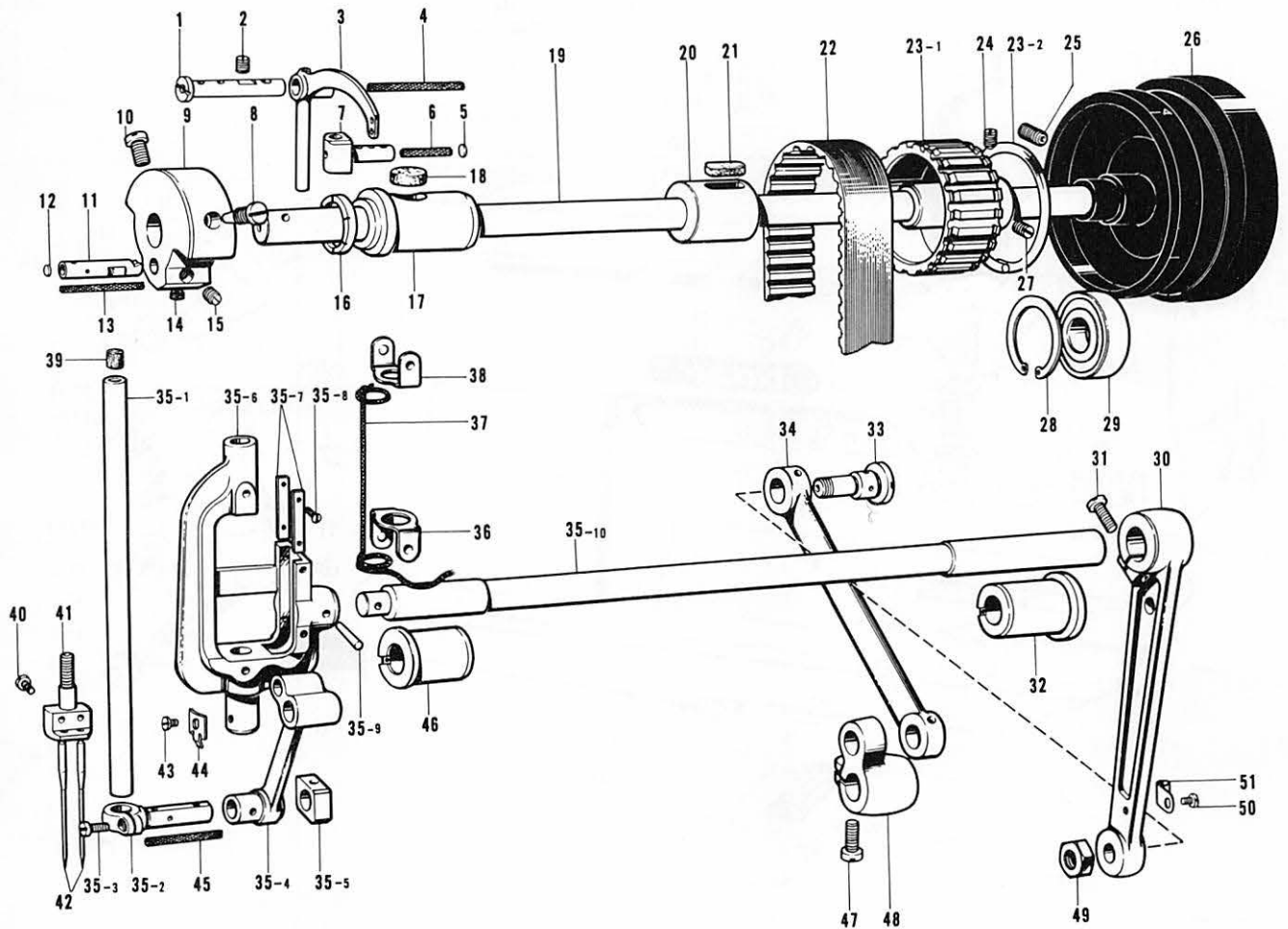
A. Machine Body and Threading	1
B. Upper Shaft and Needle Bar Rock Mechanism	2
C. Presser Foot Mechanism	3
D. Feed Mechanism	4
E. Lower Shaft and Rotary Hook Mechanism	5
F. Lubrication	6
Z. Accessories	7
DIFFERENT PARTS LIST	8
GAUGE PARTS LIST	8
INDEX	9

A. Machine Body and Threading



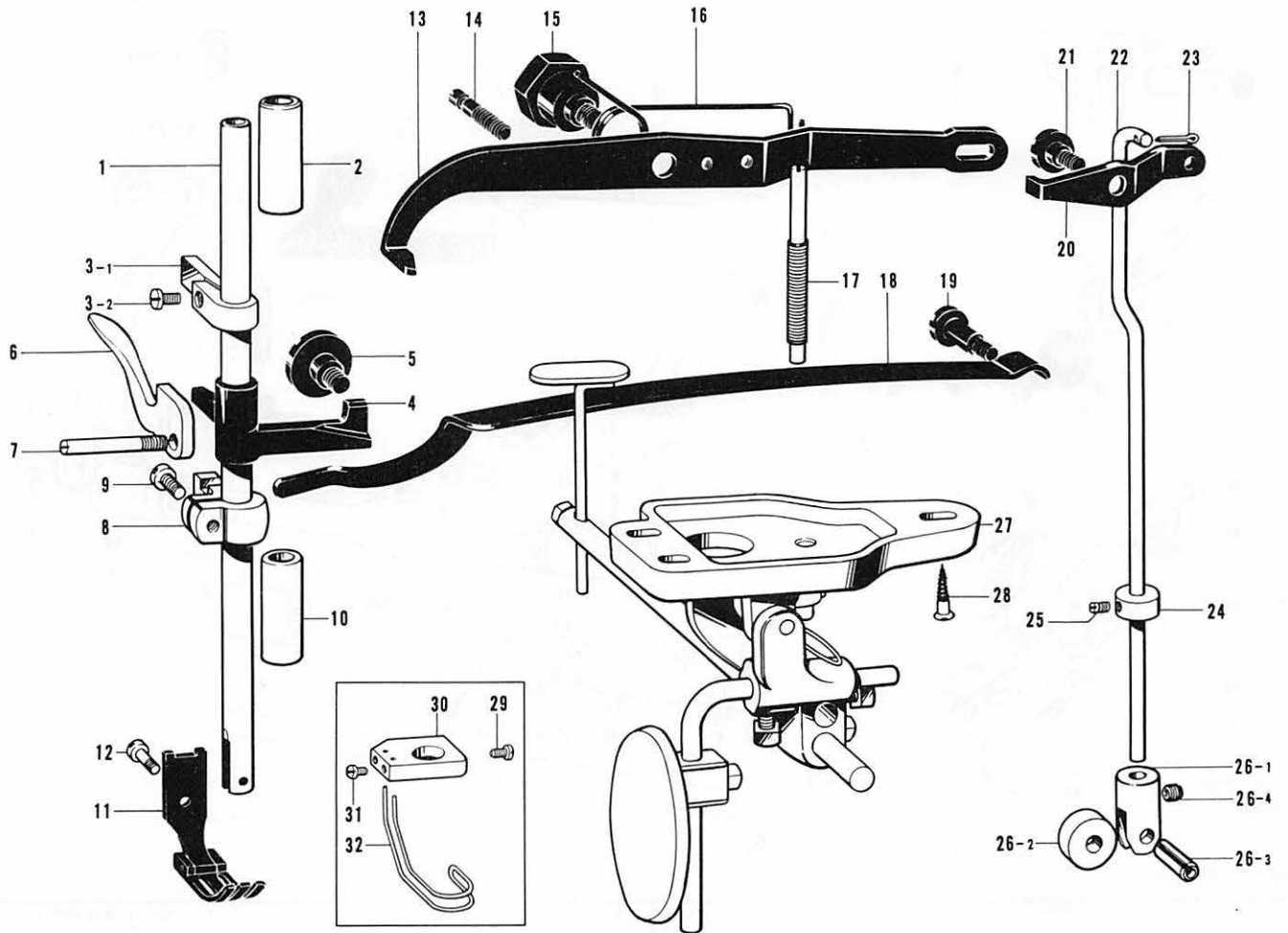
Ref. No.	Name of Parts	Q'ty	Parts No.	Assembly No.	Ref. No.	Name of Parts	Q'ty	Parts No.	Assembly No.
A- 1	Screw 3.57	1	129984-0-02		A-17-20	Screw 2.38	1	144682-0-01	A-17 155490-0-01
A- 2	Screw 3.57	1	153112-0-01		A-17-21	Tension Stud	1	144680-0-01	
A- 3	Spring Washer	1	146598-0-01		A-17-22	Thread Take-up Spring	1	155491-0-01	
A- 4	Face Plate	1	156486-0-01		A-18	Screw 4.37 x 10	1	009681-0-14	
A- 5	Screw 3.57	1	108960-0-04		A-19	Stopper	1	112709-0-01	
A- 6	Screw 4.76 x 8	1	009710-8-12		A-20	Screw 3.57 x 6	1	009670-6-12	
A- 7	Thread Take-up Cover	1	155439-0-01		A-21	Screw 3.57	1	100064-0-02	
A- 8	Top Cover	1	153876-0-02		A-22	Model Plate 882	1		
A- 9	Screw 4.37 x 12	7	009681-2-14		A-23	Pin	2		
A-10	Top Cover Thread Guide	2	140527-0-01		A-24	Pin	2		
A-11	Nut 5.95	2	150553-0-03		A-25	Name Plate	1		
A-12	Screw 5.95	2	009670-6-12		A-26	Screw 3.57	1	108960-0-04	
A-13	Name Plate	1			A-27	Thread Guide F1	1	155493-0-01	
A-14	Rear Cover	1	112566-0-03		A-28	Stud (S)	1	149853-0-01	
A-15	Packing	1	150989-0-00		A-29	Thread Guide F2	1	155494-0-01	
A-16	Parts Book Number Plate	1			A-30	Screw 4.76 x 8	1	009710-8-13	
A-17- 1	Nut 3.57	2	021670-1-02	A-17 Upper Tension Control Assembly 155490-0-01	A-31	Tension Release Shaft	1	144823-0-01	
A-17- 2	Thread Guide Bracket	2	144687-0-01		A-32	Pipe	1	112714-0-00	
A-17- 3	Thread Guide Disc	2	144686-0-01		A-33	Screw 3.57	1	108960-0-04	
A-17- 4	Thread Guide Spring	2	144688-0-01		A-34	Arm Thread Guide (Upper)	1	108266-0-01	
A-17- 5	Cap	2	144685-0-01		A-35	Screw 3.57	1	108960-0-04	
A-17- 6	Screw	2	144689-0-01		A-36	Screw 4.37	2	151602-0-01	
A-17- 7	Tension Control Nut	3	108265-0-01		A-37	Arm Thread Guide (Center)	1	112658-0-01	
A-17- 8	Tension Spring	2	155492-0-01		A-38	Felt	1	114941-0-01	
A-17- 9	Presser for Tension Disc	2	100134-0-01		A-39	Screw 3.57	1	108960-0-04	
A-17-10	Tension Disc	4	145446-0-01		A-40	Arm Thread Guide (Lower)	1	112715-0-01	
A-17-11	Pin	1	144704-0-01		A-41	Arm Bed	1		
A-17-12	Pin	1	144703-0-01		A-42	Screw 3.57	1	112751-0-02	
A-17-13	Screw 3.57	2	112712-0-01		A-43	Slide Plate (Left)	1	112606-0-01	
A-17-14	Spring	2	118320-0-01		A-44	Pin	1	113386-0-00	
A-17-15	Tension Release Plate	1	144683-0-01		A-45	Needle Plate 1/4 inch	1	117367-0-01	
A-17-16	Upper Thread Tension Plate	1			A-46	Screw 4.37	1	100032-0-03	
A-17-17	Pin	3			A-47	Slide Plate (Right)	1	112607-0-01	
A-17-18	Tension Stud	2			A-48	Screw 5.16	1	116010-0-01	
A-17-19	Spring Guide	2	108254-0-01		A-49	Slide Plate (Front) Assembly	1	112610-0-01	

B. Upper Shaft and Needle Bar Rock Mechanism



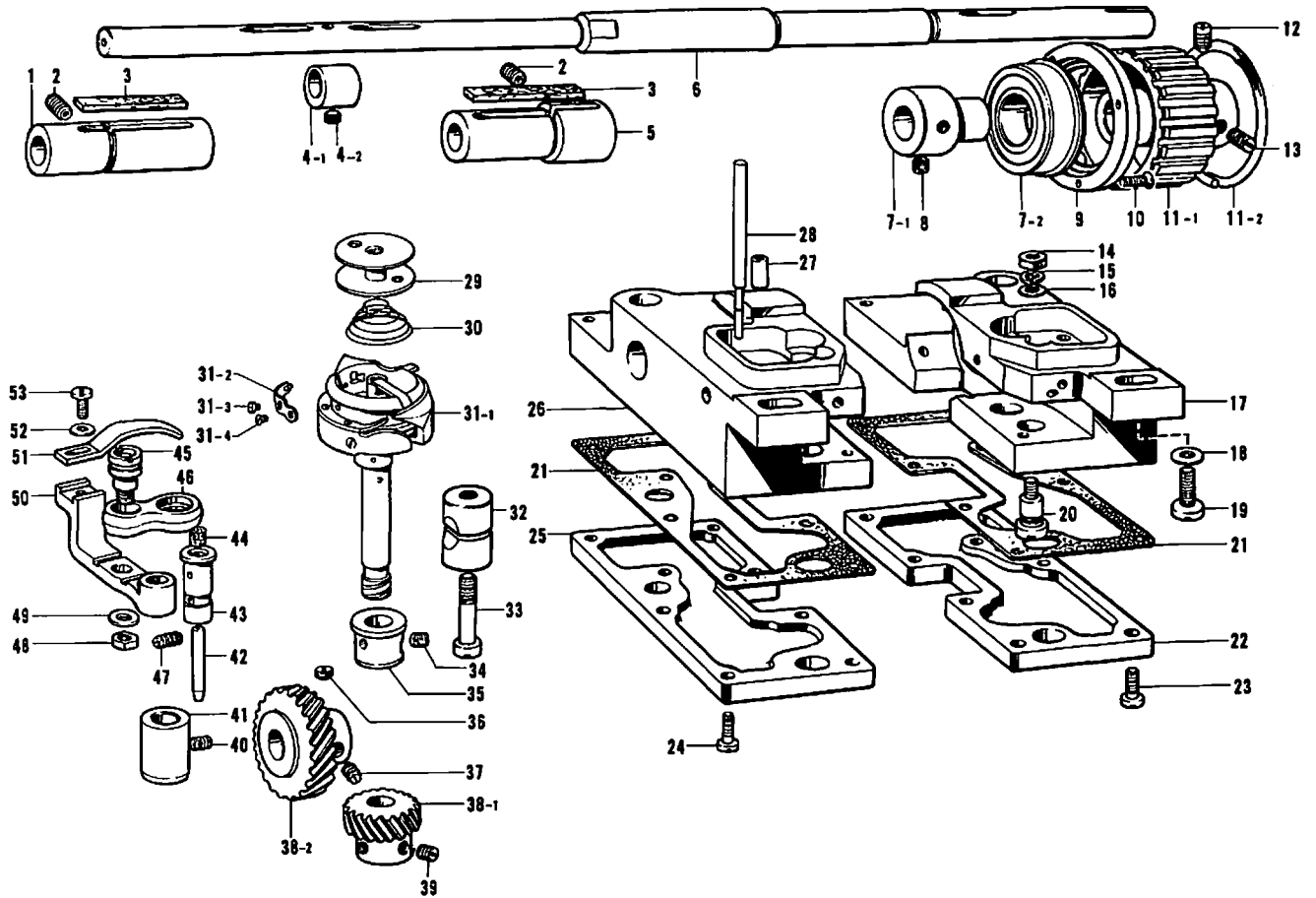
Ref. No.	Name of Parts	Q'ty	Parts No.	Assembly No.	Ref. No.	Name of Parts	Q'ty	Parts No.	Assembly No.
B- 1	Stud	1	155444-0-01		B-31	Screw 6.35	1	105351-0-02	
B- 2	Screw 5.95	2	151605-0-01		B-32	Needle Bar Rock Shaft Bushing (Right)	1	112764-0-01	
B- 3	Thread Take-up Lever	1	156485-0-01		B-33	Needle Bar Rock Link Stud	2	112597-0-01	
B- 4	Wick	1	150995-0-00		B-34	Needle Bar Rock Link	1	112596-0-01	
B- 5	Pusher	1	113024-0-00		B-35- 1	Needle Bar	1	148597-0-01	
B- 6	Wick	1	114693-0-01		B-35- 2	Needle Bar Clamp	1	112592-0-01	
B- 7	Thread Take-up Lever Slide Block	1	150899-0-01		B-35- 3	Screw 3.57 x 8	1	009670-8-12	
B- 8	Screw 7.14	1	100250-0-01		B-35- 4	Needle Bar Crank Rod	1	112593-0-01	
B- 9	Counter Weight	1	112574-0-00		B-35- 5	Needle Bar Guide Slide Block	1	112721-0-01	
B-10	Screw 7.14	1	146141-0-01		B-35- 6	Needle Bar Support	1	148596-1-00	
B-11	Needle Bar Crank	1	112577-0-01		B-35- 7	Needle Bar Guide Plate	2	112590-0-01	
B-12	Pusher	1	113014-0-00		B-35- 8	Screw 2.38	4	102731-0-04	
B-13	Wick	1	112735-0-00		B-35- 9	Pin Taper	1	107030-0-01	
B-14	Screw 6.35	1	101706-0-01		B-35-10	Needle Bar Rock Shaft	1		
B-15	Screw 6.35	1	100251-0-01		B-36	Wick Presser (Lower)	1	112720-0-01	
B-16	Thrust Ring	1	112576-0-01		B-37	Wick	1	116699-0-00	
B-17	Upper Shaft Bushing (Left)	1	112573-0-01		B-38	Wick Presser (Upper)	1	112719-0-01	
B-18	Felt	1	112734-0-01		B-39	Felt	1	149834-0-00	
B-19	Upper Shaft	1	112572-0-01		B-40	Screw 3.57	2	116323-0-01	
B-20	Upper Shaft Bushing (Center)	1	114680-0-01		B-41	Needle Clamp 1/4 inch	1	112600-0-01	
B-21	Felt	1	100248-0-01		B-42	Needle DP x 5	2		
B-22	Timing Belt	1	112586-0-01		B-43	Screw 2.38	1	105288-0-01	
B-23- 1	Timing Belt Wheel (Upper)	1		B-23 Timing Belt Wheel Upper Assembly 180157-0-01	B-44	Needle Bar Indicator	1	148598-0-01	
B-23- 2	Side Ring	2			B-45	Wick	1	150825-0-01	
B-24	Screw 6.35 x 12	1	015771-2-12		B-46	Needle Bar Rock Shaft Bushing (Left)	1	112594-0-01	
B-25	Screw 5.95	2	013761-4-10		B-47	Screw 6.35 x 18	1	009781-8-12	
B-26	Pulley	1	144614-0-01		B-48	Needle Bar Connecting Crank	1	112598-0-01	
B-27	Screw 6.35 x 12	1	013771-2-12		B-49	Nut 7.94	2	101268-0-03	
B-28	Stop Ring C	1	112760-0-01		B-50	Screw 3.57 x 5	1	009670-5-12	
B-29	Bearing 6204 VV	1	072620-4-60		B-51	Wick Supporter	1	112739-0-01	
B-30	Needle Bar Connecting Rod	1	112595-0-00						

C. Presser Foot Mechanism



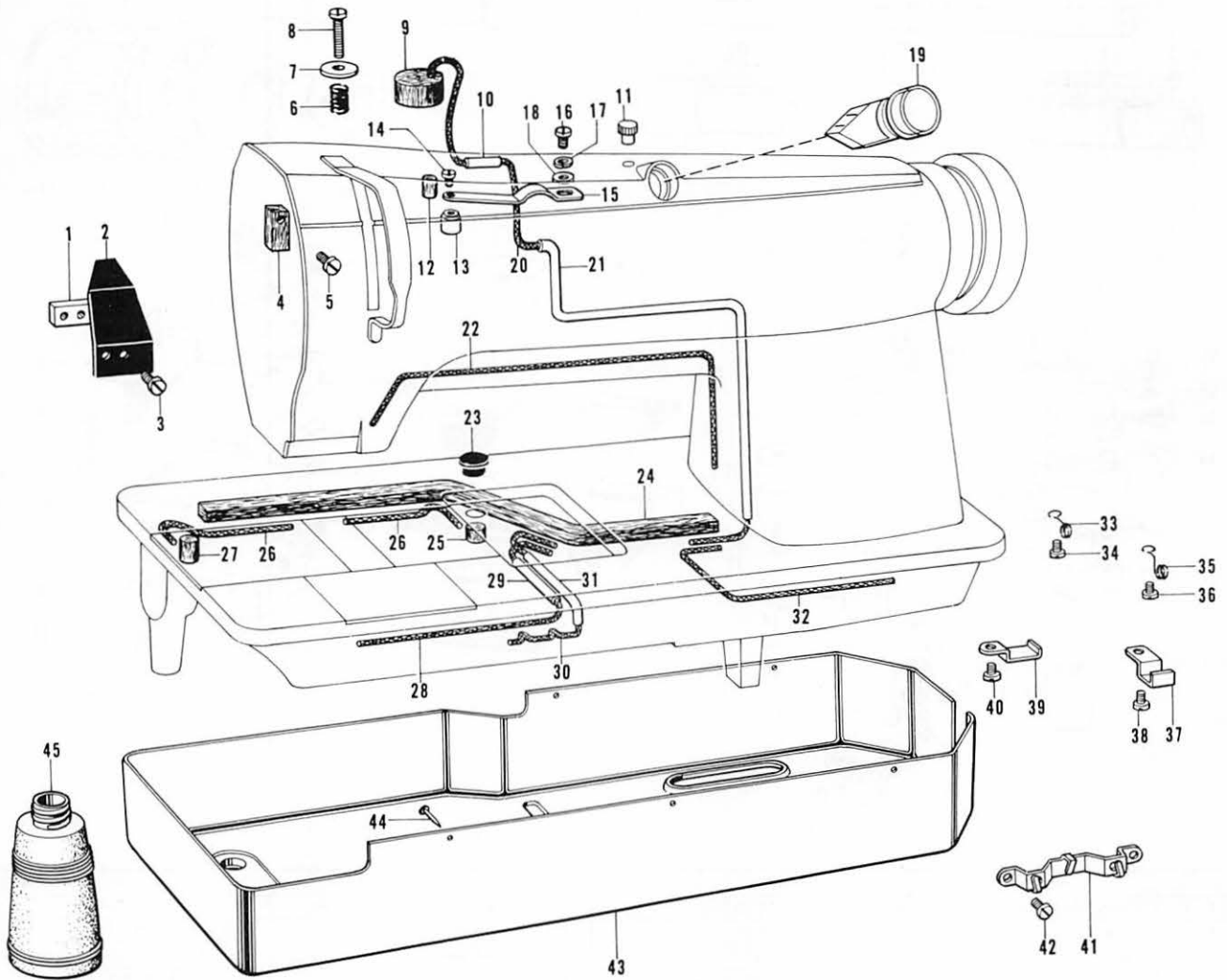
Ref. No.	Name of Parts	Q'ty	Parts No.	Assembly No.	Ref. No.	Name of Parts	Q'ty	Parts No.	Assembly No.
C- 1	Presser Bar	1	112614-0-01		C-18	Presser Plate Spring	1	118170-1-01	
C- 2	Presser Bar Bushing (Upper)	1	112615-0-01		C-19	Screw 6.35	1	112623-0-01	
C- 3-1	Presser Bar Guide	1		C-3 Presser Bar Guide Assembly 180950-0-01	C-20	Knee Lifter Connecting Lever	1	155505-0-01	
C- 3-2	Screw 4.37 x 7	1	009680-7-12		C-21	Screw 6.35	1	112628-0-01	
C- 4	Presser Bar Lifter	1	148483-0-01		C-22	Knee Lifter Connecting Rod	1	155447-0-01	
C- 5	Presser Bar Lifter Guide	1	112631-0-01		C-23	Pin	1	114909-0-00	
C- 6	Presser Foot Lifter	1	112618-0-01		C-24	Collar	1	142706-0-01	
C- 7	Screw	1	112619-0-01		C-25	Screw 3.57	1	100128-0-04	
C- 8	Presser Bar Bracket	1	112616-0-01		C-26-1	Roller Bracket	1		C-26 Roller Bracket Assembly 156824-0-01
C- 9	Screw 3.57 x 8	1	009670-8-12		C-26-2	Roller	1	112636-0-01	
C-10	Presser Bar Bushing (Lower)	1	112763-0-01		C-26-3	Spring Pin AW5	1	047501-2-42	
C-11	Presser Foot 1/4 inch	1	155453-0-01		C-26-4	Screw 4.37	1	151601-0-02	
C-12	Screw 3.57	1	113050-0-01		C-27	Knee Lifter Assembly	1	151098-0-01	
C-13	Knee Lifter Lever	1	112625-0-01		C-28	Screw 6.2 x 32	3	106030-0-01	
C-14	Stopper Screw	1	112630-0-01		C-29	Screw 3.57	1	144458-0-01	
C-15	Screw 6.35	1	112626-0-01		C-30	Finger Guard Supporter	1	151191-0-01	
C-16	Spring	1	112629-0-01		C-31	Screw	2	149177-0-01	
C-17	Presser Adjusting Screw	1	112624-0-01		C-32	Finger Guard	1	150917-0-01	

E. Lower Shaft and Rotary Hook Mechanism



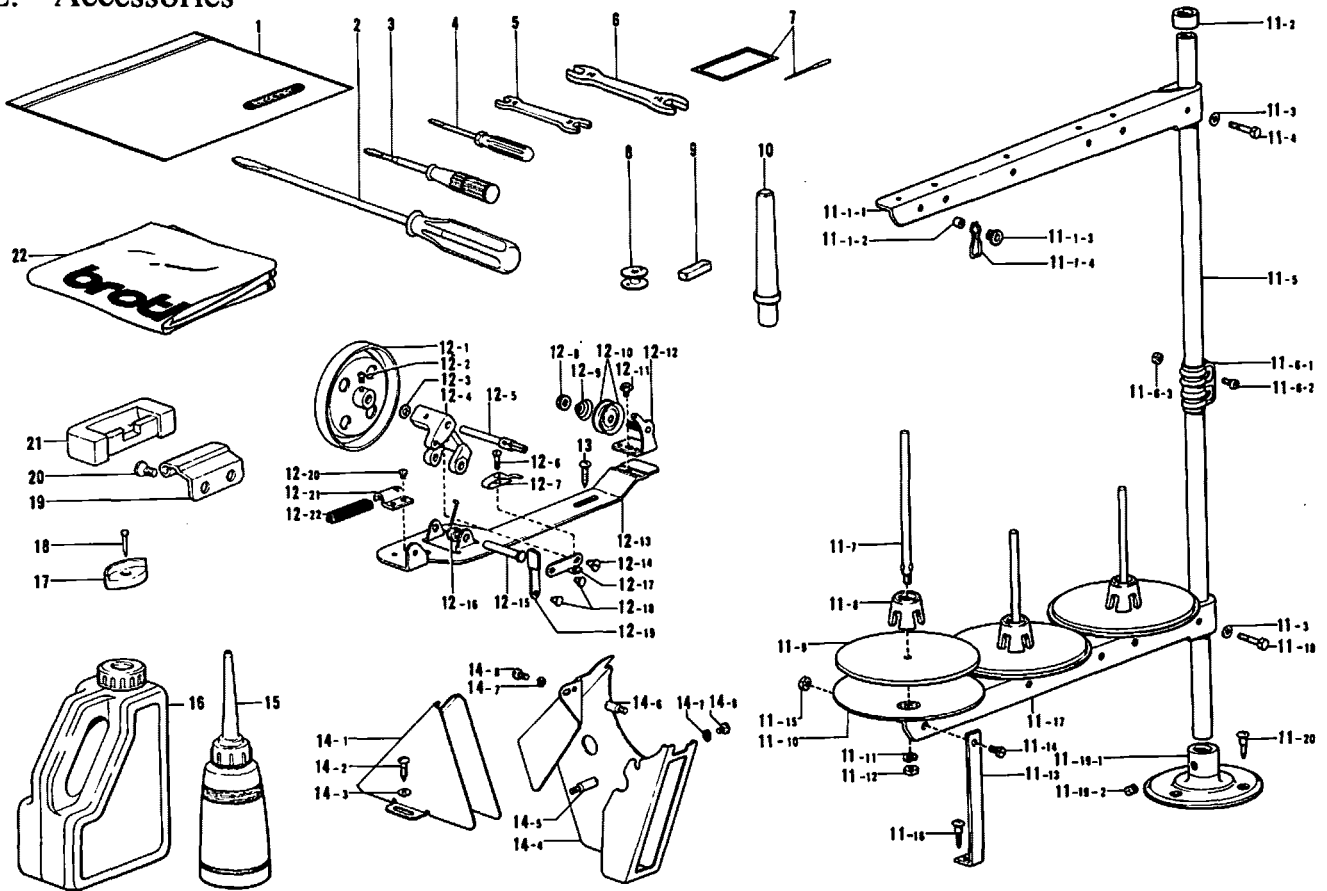
Ref. No.	Name of Parts	Q'ty	Parts No.	Assembly No.	Ref. No.	Name of Parts	Q'ty	Parts No.	Assembly No.
E- 1	Rotary Hook Base Bushing (Left)	1	148503-0-00		E-26	Rotary Hook Base (Left)	1	155465-0-01	
E- 2	Screw 5.95	2	151604-0-01		E-27	Oil Pipe	2	115287-0-00	
E- 3	Felt	2	113362-0-01		E-28	Oil Gauge	2	151006-0-01	
E- 4-1	Vertical Feed Eccentric Wheel	1		E-4 Vertical Feed Eccentric Wheel Assembly 181486-0-01	E-29	Bobbin	2	155484-0-01	
E- 4-2	Screw 6.35	1	112684-0-01		E-30	Spring	2	156557-0-01	
E- 5	Rotary Hook Base Bushing (Right)	1	148502-0-00		E-31-1	Rotary Hook	2		E-31 Rotary Hook Assembly 156514-0-01
E- 6	Lower Shaft	1	151082-0-01		E-31-2	Tension Adjusting Spring	2	156521-0-01	
E- 7-1	Bushing	1	112667-0-00	E-31-3	Tension Adjusting Screw	2	151029-0-01		
E- 7-2	Ball Bearing	1	112666-0-01	E-7 Bearing Holder Assembly 112698-0-01	E-31-4	Screw	2	156522-0-01	
E- 8	Screw 6.35 x 7	2	013780-7-10		E-32	Pinch Sleeve	2	112699-0-01	
E- 9	Presser	1	112668-0-01		E-33	Screw 5.95	2	112700-0-01	
E-10	Screw 3.57 x 12	3	005671-2-12		E-34	Screw 4.76	2	107794-0-01	
E-11-1	Timing Belt Wheel (Lower)	1		E-11 Timing Belt Wheel Lower Assembly 180164-0-01	E-35	Rotary Hook Shaft Bushing (Upper)	2	150964-1-01	
E-11-2	Ring	1			E-36	Screw 6.35	2	112684-0-01	
E-12	Screw 6.35 x 12	1	015771-2-12		E-37	Screw 6.35	4	100251-0-01	
E-13	Screw 6.35 x 12	1	013771-2-12		E-38-1	Pinion	2		E-38 Spiral Gear Assembly 180949-0-01
E-14	Nut 4.37	2	105234-0-01	E-38-2	Spiral Gear	2			
E-15	Washer 2-4.37	2	028680-2-43	E-39	Screw 6.35	6	101706-0-01		
E-16	Washer	2	100645-0-03	E-40	Screw 4.76	2	107794-0-01		
E-17	Rotary Hook Base (Right)	1	155483-0-01	E-41	Rotary Hook Shaft Bushing (Lower)	2	150965-0-01		
E-18	Washer	2	100197-0-02	E-42	Pipe	1	112696-0-00		
E-19	Screw 6.35	2	105351-0-02	E-43	Opener Lever Stud	2	150969-0-01		
E-20	Oil Adjusting Screw	2	112756-0-01	E-44	Felt	2	107155-0-01		
E-21	Packing	2	112755-0-01	E-45	Stud	2	148005-0-01		
E-22	Rotary Hook Base Oil Reservoir (Right)	1	112702-0-01	E-46	Opener Link	2	150967-0-01		
E-23	Screw 4.76	8	100320-0-02	E-47	Screw 4.76	2	153483-0-01		
E-24	Screw 4.76	8	100320-0-02	E-48	Nut 4.76	2	110161-0-06		
E-25	Oil Reservoir (Left)	1	112686-0-01	E-49	Washer 4.76	2	025710-2-32		
					E-50	Opener Lever	2	150968-0-01	
					E-51	Bobbin Case Opener	2	155482-0-01	
					E-52	Washer	2	105161-0-02	
					E-53	Screw 3.57 x 8	2	009670-8-12	

F. Lubrication



Ref. No.	Name of Parts	Q'ty	Parts No.	Assembly No.	Ref. No.	Name of Parts	Q'ty	Parts No.	Assembly No.
F- 1	Oil Stopper Plate Presser	1	112717-0-01		F-24	Felt	1	155486-0-01	
F- 2	Oil Stopper Plate	1	112716-0-01		F-25	Felt	1	112753-0-01	
F- 3	Screw 4.76 x 8	1	009710-8-12		F-26	Wick	2	155488-0-00	
F- 4	Felt	1	148762-0-01		F-27	Felt	1	112754-0-01	
F- 5	Screw 3.57 x 6	1	001670-6-12		F-28	Wick	1	112738-0-00	
F- 6	Spring	1	155485-0-01		F-29	Oil Tube	1	143671-0-00	
F- 7	Washer	1	116662-0-03		F-30	Wick 4 x 4	1	152956-0-01	
F- 8	Screw 4.76 x 16	1	009711-6-12		F-31	Oil Tube	1	148733-0-01	
F- 9	Felt (A)	1	141742-0-01		F-32	Wick	1	155489-0-00	
F-10	Oil Tube	1	150997-0-00		F-33	Tube Holder	1	112743-0-01	
F-11	Cap for Oil Inlet	1	113526-0-01		F-34	Screw 3.57 x 5	1	009670-5-12	
F-12	Felt	1	112754-0-01		F-35	Tube Holder	1	112744-0-01	
F-13	Oil Pendulum	1	150994-0-00		F-36	Screw 3.57 x 5	1	009670-5-12	
F-14	Screw 3.57 x 6	1	009670-6-12		F-37	Felt Presser	4	155487-0-01	
F-15	Spring	1	150993-0-01		F-38	Screw 3.57 x 5	4	009670-5-12	
F-16	Screw 4.37 x 6	1	009680-6-12		F-39	Felt Presser	1	114297-0-01	
F-17	Washer 2-4.37	1	028680-2-43		F-40	Screw 3.57 x 5	1	009670-5-12	
F-18	Washer 4.37	1	025680-2-32		F-41	Wick Support	1	143673-0-01	
F-19	Oil Gauge Window	1	150990-0-01		F-42	Screw 3.18 x 4	2	009660-4-12	
F-20	Wick	1	112738-0-00		F-43	Oil Pan	1	151007-1-01	
F-21	Oil Tube	1	112737-0-01		F-44	Nail	5	109714-0-00	
F-22	Wick	1	112736-0-00		F-45	Oiler	1	114486-0-01	
F-23	Oil Cap	1	112758-0-01						

Z. Accessories



Ref. No.	Name of Parts	Q'ty	Parts No.	Assembly No.	Ref. No.	Name of Parts	Q'ty	Parts No.	Assembly No.
Z- 1	Vinyl Bag		122991-0-01		Z-12- 2	Screw 4.37 x 5		100366-0-02	
Z- 2	Screw Driver 5.5 x 190		101572-1-01		Z-12- 3	Washer			
Z- 3	Screw Driver 3.4 x 70		118837-0-01		Z-12- 4	Bobbin Winder Wheel Shaft Supporter			
Z- 4	Screw Driver 1.9 x 52		142443-0-01		Z-12- 5	Bobbin Winder Shaft		117970-0-01	
Z- 5	Spanner 8 x 9		100887-0-01		Z-12- 6	Screw 3.18		100657-0-01	
Z- 6	Spanner 10 x 12		107780-0-01		Z-12- 7	Bobbin Presser		100656-0-01	
Z- 7	Needle DP x 5 Assembly				Z-12- 8	Tension Control Nut			
Z- 8	Bobbin		155484-0-01		Z-12- 9	Tension Spring		100401-0-01	
Z- 9	Felt		114941-0-01		Z-12-10	Tension Disc		145446-0-01	
Z-10	Head Rest		100477-0-01		Z-12-11	Bobbin Winder Guide Assembly			Z-12 Bobbin Winder Assembly 117963-0-01
Z-11- 1-1	Spool Holder 3			Z-11-1 Thread Hanger Assembly 3 150193-0-03	Z-12-12	Bobbin Winder Wheel Bracket			
Z-11- 1-2	Thread Bushing		142990-0-01		Z-12-13	Bobbin Winder Wheel Bracket			
Z-11- 1-3	Thread Hanger				Z-12-14	Screw 3.18		100659-0-01	
Z-11- 1-4	Thread Guide Spring		150184-0-01		Z-12-15	Pin			
Z-11- 2	Cap				Z-12-16	Spring		117969-0-01	
Z-11- 3	Washer 5		025050-2-33		Z-12-17	Bobbin Presser Arm			
Z-11- 4	Bolt 5 x 28		017502-8-03		Z-12-18	Pin			
Z-11- 5	Pipe		150172-0-01		Z-12-19	Bobbin Presser Bracket			
Z-11- 6-1	Joint			Z-11-6 Joint for Cotton Stand 150106-0-01	Z-12-20	Screw 3.57 x 3.5		009679-3-12	
Z-11- 6-2	Screw 5 x 14		150202-0-01		Z-12-21	Bobbin Winder Wheel Stopper Holder			
Z-11- 6-3	Nut 5		021500-1-03		Z-12-22	Bobbin Winder Wheel Stopper		100662-0-01	
Z-11- 7	Spool Shaft (B)		150179-0-01		Z-13	Screw 5.5 x 20		100666-0-02	
Z-11- 8	Spool Cushion		126863-0-00		Z-14- 1	Belt Cover (D)			Z-14 Belt Cover Complete D 147908-0-01
Z-11- 9	Spool Mat		150182-0-00		Z-14- 2	Screw 5.5 x 20		100666-0-02	
Z-11-10	Spool Stand Base		150180-0-00		Z-14- 3	Washer 5.56		025750-1-32	
Z-11-11	Washer 2-5		028050-2-43	Z-11 Cotton Stand Assembly 3 150151-0-03	Z-14- 4	Belt Cover UD			
Z-11-12	Nut 5		021500-1-03		Z-14- 5	Belt Cover STUD (B)		147856-0-02	
Z-11-13	Spool Holder Supporter (A)		150188-0-01		Z-14- 6	Belt Cover Stud (D)		147858-0-01	
Z-11-14	Screw 5 x 10		007501-0-03		Z-14- 7	Washer 2-4.37		028680-2-42	
Z-11-15	Nut 5		021500-1-03		Z-14- 8	Screw 4.37 x 8		009680-8-12	
Z-11-16	Screw 4.5 x 22		031452-2-03		Z-15	Oiler		114483-0-01	
Z-11-17	Spool Holder 3				Z-16	Oil Tank		154702-0-01	
Z-11-18	Bolt 5 x 28		017502-8-03		Z-17	Head Cushion		148890-1-01	
Z-11-19-1	Bracket		150189-0-01	Z-11-19 Bracket Assembly 150139-0-01	Z-18	Nail		109714-0-00	
Z-11-19-2	Screw 6 x 7		150181-1-01		Z-19	Head Hinge		148882-0-01	
Z-11-20	Screw 4.5 x 22		031452-2-03		Z-20	Screw 6.35		112569-0-01	
Z-12- 1	Bobbin Winder Wheel Assembly			Z-12 117963-0-01	Z-21	Rubber Hinge		143910-0-01	
					Z-22	Head Cover		144222-0-01	

*The details of included accessories are subject to change.

*Änderungen in der Aufstellung der mitgelieferten Zubehöre sind vorbehalten.

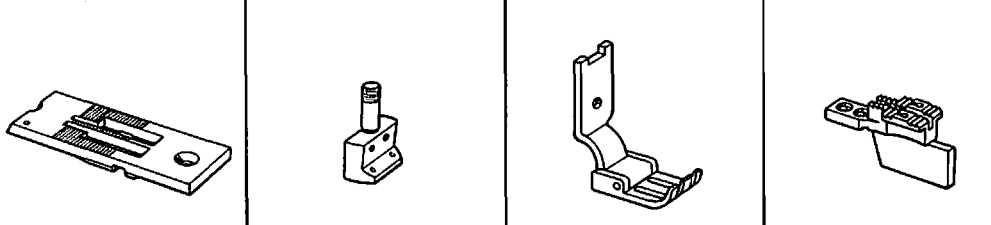
*Les détails des accessoires inclus sont sujets à des changements.

*Los detalles de los accesorios incluidos pueden variar.

DIFFERENT PARTS LIST

Ref. No.	Name of Parts	Sub-class	LT2-B882-3 (For medium-thick materials)	LT2-B882-5 (For thick materials)
		B-42	Needle DP x 5	
Z- 7	Needle DP x 5 Assembly		107415-4-14	107415-4-22

GAUGE PARTS LIST

Name of Parts				
	Needle Gauge	Needle Plate	Needle Clamp	Presser Foot Assembly
1/8 inch (3.17 mm)	117369-0-01	114947-0-01	155463-0-01	114951-0-01
5/32 inch (3.96 mm)	150850-0-01	116489-0-01	155455-0-01	116509-0-01
3/16 inch (4.76 mm)	117133-0-01	112599-0-01	155457-0-01	112659-0-01
1/4 inch (6.35 mm)	117367-0-01	112600-0-01	155453-0-01	112660-0-01
5/16 inch (7.93 mm)	144882-0-01	112601-0-01	155459-0-01	112661-0-01
3/8 inch (9.52 mm)	144881-1-01	116491-0-01	155461-0-01	116510-0-01

*For parts of a different gauge size than those listed above, please order from a Brother dealer.

*Zubehörteile, die sich in der Größe von den oben aufgeführten unterscheiden, bei einem Brother-Fachhändler bestellen.

*Pour les pièces d'une taille de jauge différente que celles mentionnées ci-dessus, passer commande chez un représentant Brother.

*Para piezas con un tamaño de calibrador diferente a los que se mencionan en el cuadro anterior, recurrir a un distribuidor Brother.

INDEX

Parts No.	Ref. No.	Remark	Parts No.	Ref. No.	Remark	Parts No.	Ref. No.	Remark	Parts No.	Ref. No.	Remark
001670-6-12	F- 5		100251-0-01	B-15		112598-0-01	B-48		114486-0-01	F-45	
005671-2-12	E-10			E-37		112600-0-01	B-41		114680-0-01	B-20	
007501-0-03	Z-11-14		100320-0-02	E-23		112606-0-01	A-43		114693-0-01	B- 6	
009660-4-12	F-42			E-24		112607-0-01	A-47		114909-0-00	C-23	
009670-5-12	B-50		100328-0-01	D-16		112610-0-01	A-49		114941-0-01	A-38	
	F-34		100366-0-02	Z-12- 2		112614-0-01	C- 1			Z- 9	
	F-36		100401-0-01	Z-12- 9		112615-0-01	C- 2		115287-0-00	E-27	
	F-38		100477-0-01	Z-10		112616-0-01	C- 8		116010-0-01	A-48	
	F-40		100645-0-03	D-25		112618-0-01	C- 6		116283-0-01	D-63	
009670-6-12	A-12			E-16		112619-0-01	C- 7		116323-0-01	B-40	
	A-20		100656-0-01	Z-12- 7		112623-0-01	C-19		116662-0-03	F- 7	
	F-14		100657-0-01	Z-12- 6		112624-0-01	C-17		116699-0-00	B-37	
009670-8-12	B-35- 3		100659-0-01	Z-12-14		112625-0-01	C-13		117367-0-01	A-45	
	C- 9		100662-0-01	Z-12-22		112626-0-01	C-15		117963-0-01	Z-12	
	E-53		100666-0-02	Z-13		112628-0-01	C-21		117969-0-01	Z-12-16	
009679-3-12	Z-12-20			Z-14- 2		112629-0-01	C-16		117970-0-01	Z-12- 5	
009680-6-12	F-16		100887-0-01	Z- 5		112630-0-01	C-14		118170-1-01	C-18	
009680-7-12	C- 3- 2		101268-0-03	B-49		112631-0-01	C- 5		118320-0-01	A-17-14	
009680-8-12	Z-14- 8		101572-1-01	Z- 2		112636-0-01	C-26- 2		118713-0-01	D-28	
009681-0-12	D-26		101706-0-01	B-14		112658-0-01	A-37		118746-0-01	D- 6	
	D-36- 3			D-35- 2		112660-0-01	D-62		118747-0-01	D- 8	
009681-0-14	A-18			D-47		112666-0-00	E- 7- 2		118837-0-01	Z- 3	
009681-2-14	A- 9			E-39		112667-0-01	E- 7- 1		118853-0-01	D- 9	
009710-8-12	A- 6		102731-0-04	B-35- 8		112668-0-01	E- 9			D-34	
	D-31		104908-0-04	D-51		112684-0-01	E- 4- 2		118954-0-00	D-39- 2	
	F- 3		105161-0-02	E-52			E-36		122991-0-01	Z- 1	
009710-8-13	A-30		105234-0-01	E-14		112686-0-01	E-25		126863-0-00	Z-11- 8	
009711-4-12	D-23		105288-0-01	B-43		112696-0-00	E-42		129984-0-02	A- 1	
009711-6-12	F- 8		105351-0-02	B-31		112698-0-01	E- 7		140527-0-01	A-10	
009761-4-12	D-57			E-19		112699-0-01	E-32		141742-0-01	F- 9	
009781-8-12	B-47		106030-0-01	C-28		112700-0-01	E-33		142443-0-01	Z- 4	
	D-45		107030-0-01	B-35- 9		112702-0-01	E-22		142706-0-01	C-24	
013761-4-10	B-25		107155-0-01	E-44		112709-0-01	A-19		142746-0-02	D-14	
	D-49		107278-0-02	D-56		112712-0-01	A-17-13		142747-0-02	D-15	
013771-2-12	B-27		107415-0-14	B-42		112714-0-00	A-32		142990-0-01	Z-11- 1- 2	
	E-13		107415-0-22	B-42		112715-0-01	A-40		143591-0-01	D-53	
013780-7-10	E- 8		107415-4-14	Z- 7		112716-0-01	F- 2		143594-0-01	D-36- 2	
014760-6-22	D-20		107415-4-22	Z- 7		112717-0-01	F- 1		143597-0-01	D-38	
015771-2-12	B-24		107780-0-01	Z- 6		112719-0-01	B-38		143598-0-01	D-11	
	E-12		107794-0-01	E-34		112720-0-01	B-36		143608-0-01	D-19	
017502-8-03	Z-11- 4			E-40		112721-0-01	B-35- 5		143609-0-01	D-32	
	Z-11-18		108254-0-01	A-17-19		112734-0-01	B-18		143610-0-01	D-30	
021500-1-03	Z-11- 6- 3		108265-0-01	A-17- 7		112735-0-00	B-13		143613-0-01	D-39- 3	
	Z-11-12		108266-0-01	A-34		112736-0-00	F-22		143616-0-01	D-42	
	Z-11-15		108546-0-01	D-19- 2		112737-0-01	F-21		143671-0-00	F-29	
021660-1-03	D-55		108549-0-01	D-10		112738-0-00	F-20		143673-0-01	F-41	
021670-1-02	A-17- 1		108960-0-04	A- 5			F-28		143766-0-01	D- 1	
025050-2-33	Z-11- 3			A-26		112739-0-01	B-51		143910-0-01	Z-21	
025060-1-32	D-58			A-33		112743-0-01	F-33		144222-0-01	Z-22	
025680-2-32	F-18			A-35		112744-0-01	F-35		144458-0-01	C-29	
025710-2-32	E-49			A-39		112751-0-02	A-42		144614-0-01	B-26	
025750-1-32	Z-14- 3		109714-0-00	F-44		112753-0-01	F-25		144680-0-01	A-17-21	
028050-2-43	Z-11-11			Z-18		112754-0-01	F-12		144682-0-01	A-17-20	
028680-2-42	Z-14- 7		110161-0-06	E-48			F-27		144683-0-01	A-17-15	
028680-2-43	E-15		112072-0-01	D- 7		112755-0-01	E-21		144685-0-01	A-17- 5	
	F-17		112566-0-03	A-14		112756-0-01	E-20		144686-0-01	A-17- 3	
031452-2-03	Z-11-16		112569-0-01	Z-20		112758-0-01	F-23		144687-0-01	A-17- 2	
	Z-11-20		112572-0-01	B-19		112759-0-01	D-60		144688-0-01	A-17- 4	
047501-2-42	C-26- 3		112573-0-01	B-17		112760-0-01	B-28		144689-0-01	A-17- 6	
048060-3-42	D-43		112574-0-00	B- 9		112763-0-01	C-10		144703-0-01	A-17-12	
048070-3-42	D- 3		112576-0-01	B-16		112764-0-01	B-32		144704-0-01	A-17-11	
072620-4-60	B-29		112577-0-01	B-11		113014-0-00	B-12		144823-0-01	A-31	
100032-0-03	A-46		112586-0-01	B-22		113024-0-00	B- 5		145328-0-01	D-36- 4	
100064-0-02	A-21		112590-0-01	B-35- 7		113050-0-01	C-12		145446-0-01	A-17-10	
100128-0-04	C-25		112592-0-01	B-35- 2		113074-0-01	D-46			Z-12-10	
100134-0-01	A-17- 9		112593-0-01	B-35- 4		113362-0-01	E- 3		145502-0-01	D-17	
100197-0-02	E-18		112594-0-01	B-46		113386-0-00	A-44		146141-0-01	B-10	
100242-0-03	D-61		112595-0-00	B-30		113526-0-01	F-11		146598-0-01	A- 3	
100248-0-01	B-21		112596-0-01	B-34		114297-0-01	F-39		147503-0-01	D-21	
100250-0-01	B- 8		112597-0-01	B-33		114483-0-01	Z-15		147856-0-02	Z-14- 5	

Parts No.	Ref. No.	Remark	Parts No.	Ref. No.	Remark	Parts No.	Ref. No.	Remark	Parts No.	Ref. No.	Remark
147858-0-01	Z-14- 6		151605-0-01	B- 2							
147908-0-01	Z-14			D- 4							
148005-0-01	E-45			D-40- 2							
148483-0-01	C- 4		152956-0-01	F-30							
148488-0-01	D- 2		153112-0-01	A- 2							
148489-0-01	D- 5		153168-0-01	D-12							
148493-0-01	D-41		153483-0-01	E-47							
148494-0-01	D-48		153876-0-02	A- 8							
148502-0-00	E- 5		154702-0-01	Z-16							
148503-0-01	E- 1		154792-0-01	D-13							
148595-1-01	B-35		155439-0-01	A- 7							
148596-1-00	B-35- 6		155444-0-01	B- 1							
148597-0-01	B-35- 1		155447-0-01	C-22							
148598-0-01	B-44		155448-0-01	D-27							
148733-0-01	F-31		155449-0-01	D-33							
148743-0-01	D-37		155450-0-01	D-18							
148762-0-01	F- 4		155451-0-01	D-40							
148771-0-01	D-36		155453-0-01	C-11							
148882-0-01	Z-19		155465-0-01	E-26							
148890-1-01	Z-17		155482-0-01	E-51							
148977-0-01	D-54		155483-0-01	E-17							
149001-0-01	D-50		155484-0-01	E-29							
149177-0-01	C-31			Z- 8							
149282-0-01	D-24		155485-0-01	F- 6							
149834-0-00	B-39		155486-0-01	F-24							
149853-0-01	A-28		155487-0-01	F-37							
150106-0-01	Z-11- 6		155488-0-00	F-26							
150139-0-01	Z-11-19		155489-0-00	F-32							
150151-0-03	Z-11		155490-0-01	A-17							
150172-0-01	Z-11- 5		155491-0-01	A-17-22							
150175-0-01	Z-11-17		155492-0-01	A-17- 8							
150179-0-01	Z-11- 7		155493-0-01	A-27							
150180-0-00	Z-11-10		155494-0-01	A-29							
150181-1-01	Z-11-19- 2		155505-0-01	C-20							
150182-0-00	Z-11- 9		156070-0-01	D-22							
150184-0-01	Z-11- 1- 4		156485-0-01	B- 3							
150188-0-01	Z-11-13		156486-0-01	A- 4							
150189-0-01	Z-11-19- 1		156514-0-01	E-31							
150193-0-03	Z-11- 1		156521-0-01	E-31- 2							
150202-0-01	Z-11- 6- 2		156522-0-01	E-31- 4							
150553-0-03	A-11		156557-0-01	E-30							
150825-0-01	B-45		156824-0-01	C-26							
150899-0-01	B- 7		180157-0-01	B-23							
150917-0-01	C-32		180164-0-01	E-11							
150926-0-01	D-39		180321-0-01	D-35							
150927-0-00	D-39- 1		180949-0-01	E-38							
150930-0-01	D-44		180950-0-01	C- 3							
150958-0-01	D-59		181486-0-01	E- 4							
150964-1-01	E-35										
150965-0-01	E-41										
150967-0-01	E-46										
150968-0-01	E-50										
150969-0-01	E-43										
150989-0-00	A-15										
150990-0-01	F-19										
150993-0-01	F-15										
150994-0-00	F-13										
150995-0-00	B- 4										
150997-0-00	F-10										
151006-0-01	E-28										
151007-1-01	F-43										
151029-0-01	E-31- 3										
151081-0-01	D-52										
151082-0-01	E- 6										
151098-0-01	C-27										
151191-0-01	C-30										
151601-0-02	C-26- 4										
151602-0-01	A-36										
	D-29										
151604-0-01	E- 2										



118-882
195882-0-02
November, 1981
Printed in Japan

From the library of: Superior Sewing Machine & Supply LLC